

Résidence "ELENA II"

COMMUNE DE BASTIA
BATIMENT 6 - LOT 12 - DUPLEX - TYPE 4

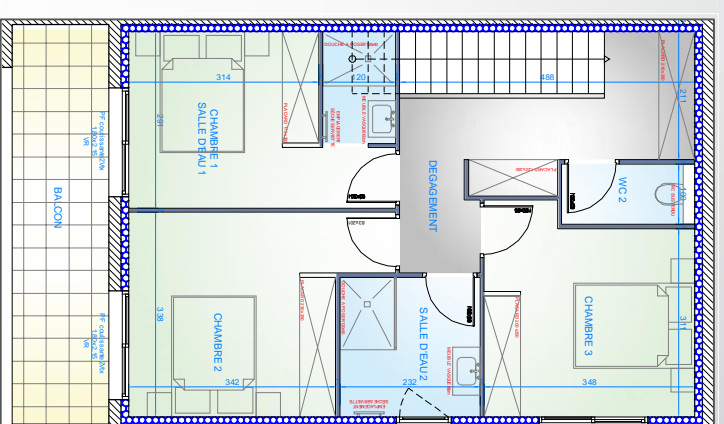
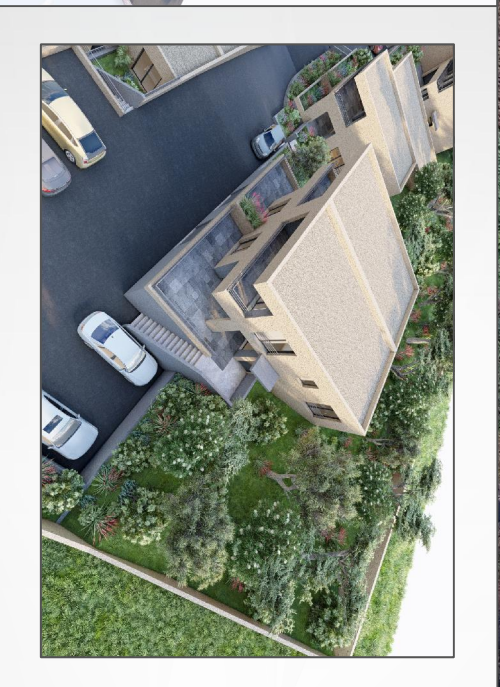
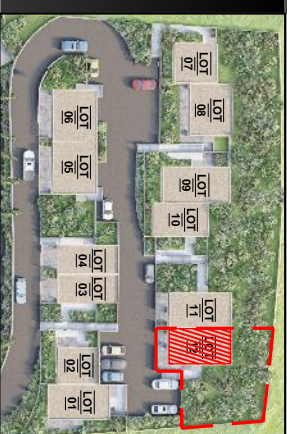
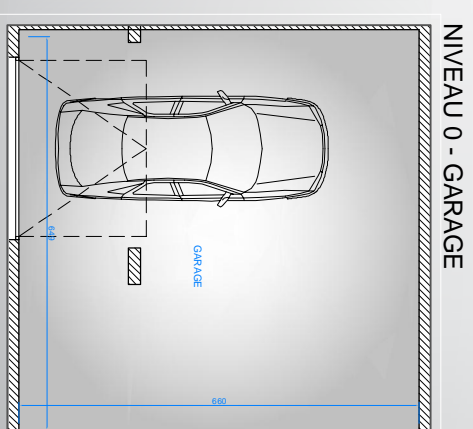
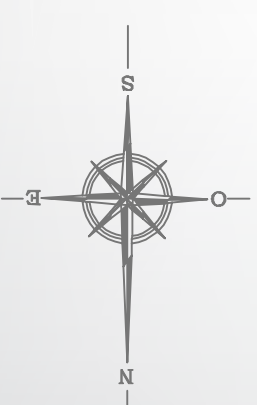


TABLEAU DES SURFACES
BATIMENT 6 - LOT 12 - T4 - duplex

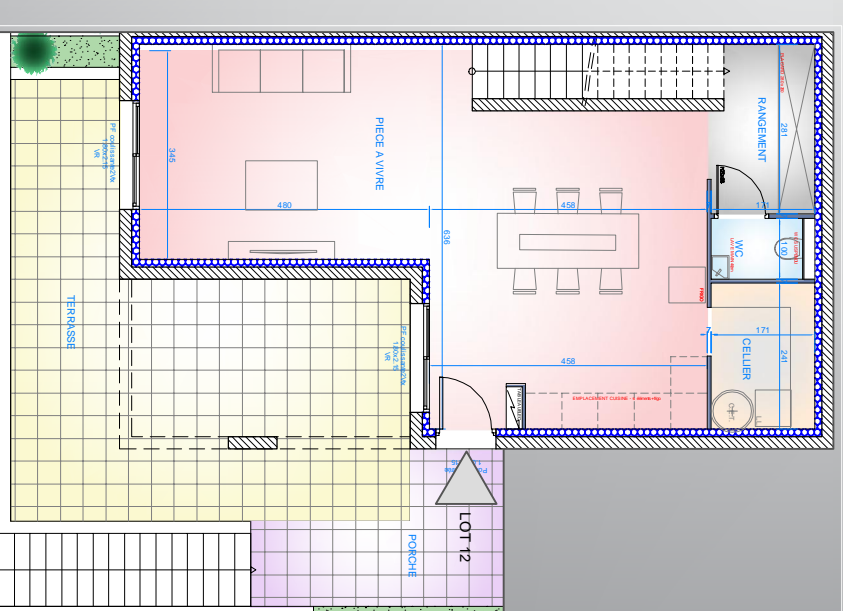
NIVEAU 1	
PIECE A VIVRE	40.21m²
CELLIER	4.12m²
RANGEMENT	4.42m²
WC 1	1.51m²
DEGAGEMENT	9.87m²
CHAMBRE 1 - SALLE DEAU 1	12.35m²
CHAMBRE 2	12.56m²
CHAMBRE 3	11.04m²
SALLE DEAU 2	5.34m²
WC 2	2.00m²
TOTAL	103.42m²

PORCHE - PALIER	7.72m²
TERRASSE	32.18m²
BALCON	10.38m²
GARAGE	42.83m²
JARDIN PRIVATIF EN PLANCHES	env. 80.00m²
ESPACE VERT	

NIVEAU 2 - COIN NUIT



NIVEAU 0 - GARAGE



NIVEAU 1 - COIN JOUR

